

INTEGRATE THE EXTENDED ENTERPRISE WITH RED HAT JBOSS FUSE

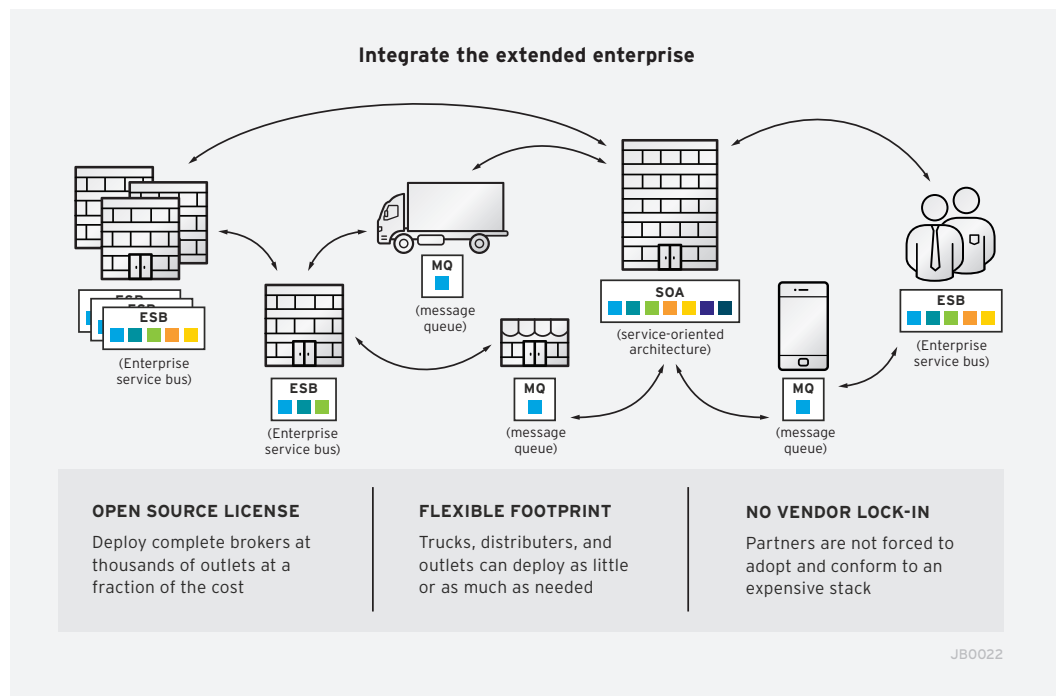
DATASHEET

“Our main goal at Sabre is stability, scalability, and flexibility for our partners. When evaluating solutions, we recognized that [Red Hat JBoss] Fuse ESB is standards-based at its core and would allow for a pluggable architecture so that our partners could continue to use their preferred solutions.”

ROBERT WISEMAN
CTO, SABRE HOLDINGS

Red Hat® JBoss® Fuse is an open source enterprise service bus (ESB) that reduces the pain of connecting disparate applications, services, and devices for comprehensive and efficient solutions. JBoss Fuse includes the popular and versatile Apache Camel project, an implementation of the most commonly used enterprise integration patterns. With integration patterns and over 150 connectors ready to use, JBoss Fuse supports integration across the extended enterprise—including applications and services on premise, on mobile devices, or in the cloud. JBoss Fuse is complemented by Red Hat JBoss Developer Studio for easier development of integration solutions and Red Hat JBoss Operations Network for monitoring of deployed solutions.

Red Hat JBoss Fuse for xPaaS extends the integration capabilities to Red Hat’s Platform-as-a-Service (PaaS) solution, OpenShift by Red Hat, and enables integrated solutions to be seamlessly designed, developed, deployed, and managed in the cloud.



facebook.com/redhatinc
@redhatnews
linkedin.com/company/red-hat

EVERYTHING IS CONNECTED

RED HAT JBOSS FUSE FEATURES:	YOU BENEFIT FROM:
Near-universal connectivity	Ability to connect all enterprise assets for consistent, efficient, and automated solutions.
Flexibility across an open, hybrid cloud	Deployment and management across all major cloud environments, tooling for provisioning servers, and debugging and maintaining integration services.
Less expensive open source technology	The ability to try before you buy and deploy widely for much less than traditional software.
Ease of adoption	Easy, fast integration of services and applications using enterprise integration patterns and a multitude of connectors with Apache Camel.
Reduced maintenance costs	Selective installation of just the components you need for a small footprint.

INTEGRATE EVERYWHERE

The lightweight and flexible architecture of Red Hat JBoss Fuse enable integration at different end points like devices, trucks, store-fronts, warehouses, and traditional datacenters.

Red Hat JBoss xPaaS services for OpenShift enable middleware capabilities in the OpenShift PaaS solution, for a unified experience across development, deployment, management, monitoring, flexibility and scalability.

With Red Hat JBoss Fuse for xPaaS, you'll have:

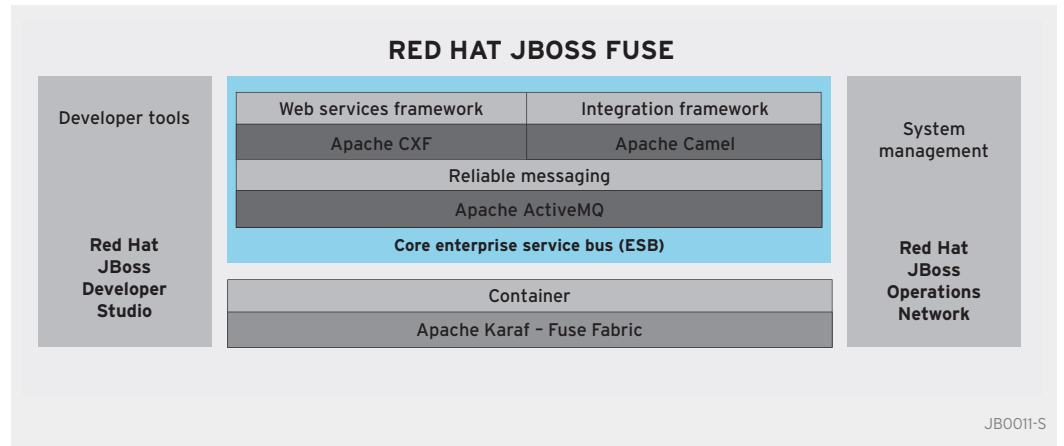
- **Rapid integration:** Seamlessly create integration solutions using pattern-based integration framework, ubiquitous connectivity, and alignment with the DevOps and continuous integration practices.
- **Quick prototyping:** Prototype integration solutions without worrying about the right environment. Develop quickly, test, learn, and innovate to get solutions to market faster.

SUPPORTED STANDARDS

Red Hat JBoss Fuse adheres to industry standards including Java™ Message Service (JMS) 1.1, Transmission Control Protocol (TCP), Secure Sockets Layer (SSL), User Datagram Protocol (UDP), MQ Telemetry Transport (MQTT), Advanced Message Queueing Protocol (AMQP), and multicast transport protocols. Also supported are Ajax, REST, and web services standards Simple Object Access Protocol (SOAP), Web Service Definition Language (WSDL), JAX-WS, JAX-RS, Streaming Text Oriented Messaging Protocol (STOMP), network management systems (NMS), WS-Security and WS-ReliableMessaging and many others so that it requires minimal proprietary knowledge and uses knowledge from a larger community of developers.

RED HAT JBOSS FUSE COMPONENTS

Red Hat JBoss Fuse is a comprehensive integration platform that can be configured with any combination of components for a customized IT footprint. JBoss Fuse is the core ESB in Red Hat JBoss Fuse Service Works, which offers an additional services framework, service orchestration and governance, and rules processing.



The functional components of Red Hat JBoss Fuse include:

- **Container:** The foundation of JBoss Fuse is a container. This layer is based on Apache Karaf and enhanced by Fuse Fabric, which simplifies the management of large numbers of distributed containers.
- **Integration framework:** Use a standard method of notation and a high-level, domain-specific language to go from diagram to implementation with minimal coding. This layer is based on Apache Camel and includes over 150 connectors.
- **Web services framework:** Turn any application or system into a service for inclusion in your service-based architecture. Service enablement technology is based on Apache CXF.
- **Reliable messaging:** Red Hat JBoss A-MQ, fast, standards-based message broker based on Apache ActiveMQ, easily extends your datacenter to the Internet of Things.
- **Development and tooling:** Red Hat JBoss Developer Studio, with Fuse IDE, supports JBoss Fuse with tooling to help you with development.
- **Management and monitoring:** Production environments are supported by Fabric Management Console for management and Red Hat JBoss Operations Network for monitoring of your Red Hat JBoss Middleware infrastructure.

INTEGRATING EVERYTHING, EVERYWHERE

Some integration challenges require comprehensive integration capabilities, while others need light-weight, easy-to-manage integration platforms with small footprints – and some require both. Red Hat JBoss Fuse and Red Hat JBoss Fuse for xPaaS can be deployed and easily managed in any configuration, so you can have a different configuration for every endpoint. Deploy a network of configurations across your infrastructure – on premise, in the cloud, or in a hybrid configuration.

With this cost-effective, flexible, and cloud-ready integration platform, businesses can finally integrate everything and integrate everywhere.

FROM APACHE PROJECT TO RED HAT PRODUCT

Red Hat starts with the community distributions, integrates the projects, and puts resulting distributions through rigorous quality assurance processes and packages them for IT organizations.

Red Hat products are backed by training and consulting packages to help you build your applications, and by enterprise-class subscriptions that include 24x7 support and a collaborative relationship with your technology vendor.

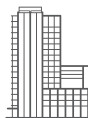
Red Hat employs many of the Apache Project Management Committee (PMC) chairs and members for the projects, and over 25 active Apache committers. No other organization knows these projects better or has more input into the projects' direction. The years of enterprise experience combined with having an inside track at Apache make Red Hat products, services, and support invaluable to any application integration project.

Want to learn more?

- **Download Red Hat JBoss Middleware products.** Install, run demos, and develop proof-of-concept projects. Eliminate risk by trying the software before you buy at access.redhat.com/downloads.
- **Learn how to make the most of Red Hat JBoss Middleware.** Peruse our resources and get up to speed fast. View webinar, tutorials, demos, and more at jboss.org/developer.
- **Get involved. Open source software belongs to you.** Blog, join a user group, contribute code, or test upcoming releases at jboss.org/contribute and apache.org.

ABOUT RED HAT

Red Hat is the world's leading provider of open source solutions, using a community-powered approach to provide reliable and high-performing cloud, virtualization, storage, Linux, and middleware technologies. Red Hat also offers award-winning support, training, and consulting services. Red Hat is an S&P company with more than 70 offices spanning the globe, empowering its customers' businesses.



facebook.com/redhatinc
@redhatnews
linkedin.com/company/red-hat

NORTH AMERICA
1 888 REDHAT1

**EUROPE, MIDDLE EAST,
AND AFRICA**
00800 7334 2835
europe@redhat.com

ASIA PACIFIC
+65 6490 4200
apac@redhat.com

LATIN AMERICA
+54 11 4329 7300
info-latam@redhat.com